

AE-7PMW ON / OFF FOOT CONTROL QUICK REFERENCE CARD

Out of the Box

1. Remove the wireless foot control and receiver from the packaging.



2. Battery Install / Replacement

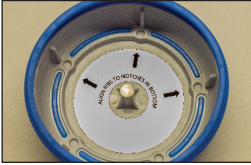
a. Peel back the rubber seal to your foot control to reveal the inner casing.



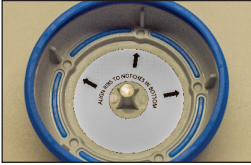
b. Separate the bottom casing from the top to reveal batteries.



c. Replace the old battery with a new AA battery.



d. Align top casing to the points marked by the inner label to reassemble.



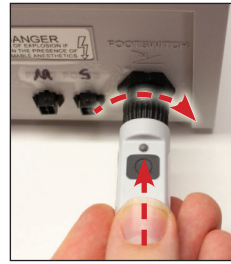
i When replacing the top casing of your foot control, align to the points marked by the inner label.

i When an alternating orange LED starts flashing next to your pairing button, it is time to replace your batteries. When the battery is low, the foot control will periodically beep twice (high to low pitch).

3. Ensure that your Aseptico unit is plugged in and

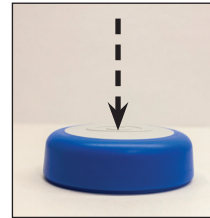
the power is turned OFF.

4. Locate the foot control connector on your Aseptico unit. Insert the receiver into the connector and turn the locking sleeve clockwise until secured.



5. Switch the power to ON to power up your Aseptico unit.

6. Your foot control comes pre-paired to the receiver and should run the motor when you depress the foot control. If it does not refer to Pairing Instructions.



i Foot control will go to sleep when not in use. Pressing the pedal will wake it up and trigger two beeps (low to high pitch).

Pairing Instructions

1. Depress foot control to activate.

2. Peel back the rubber seal to your foot control to reveal the bottom casing.

3. Separate the bottom casing from the top to reveal the pairing button.

4. Press and hold the pairing button in the foot control and turn over to check for Fast Blinking Blue Light.



AE-7PMW ON / OFF FOOT CONTROL QUICK REFERENCE CARD

5. Press and hold the receiver button hard until it is Fast Blinking Blue.
6. After three seconds the flashing should turn into a Solid Blue Light indicating successful pairing
7. To ensure your motor and foot control have connected, press down on your wireless foot control. You should hear an audible beep from the control and you should hear the motor in your Aseptico unit activate.



i *Foot control beep – When connected, the foot control will beep each time it is pressed. Press the pairing button twice quickly to enable/disable the foot control beep.*

Light Indicators

States for LED Lights and Pairing	Receiver & Foot Control	Foot Control Only
Not Connected	Slow Blinking Blue	
Ready for pairing	Fast Blinking Blue	
Connected	Solid Blue	
Low Battery	NA	Alternating Blue & Orange (high to low pitch beep)
Wake up	NA	Two beeps (low to high pitch)

Operation Instructions - AE-7PMW Foot Control

The AE-7PMW foot control provides basic on-off control of the system.



ON/OFF — Depress the foot control to activate the motor at the settings displayed on the screen.

Cleaning / Maintenance

Clean the exterior of the foot control by wiping with a soft cloth moistened with mild detergent or 10% bleach solution (1-part bleach to 9-parts water). Use of solvents or other solutions may cause damage and void the warranty.

Battery Type

Alkaline, 1.5V, size AA